

# Sensori di velocità ad effetto Hall (3)

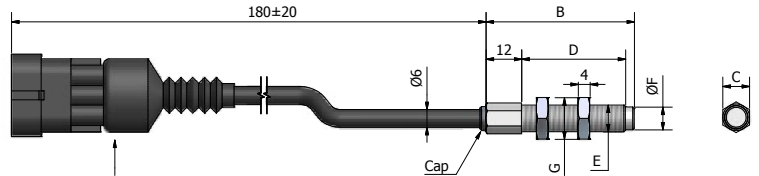
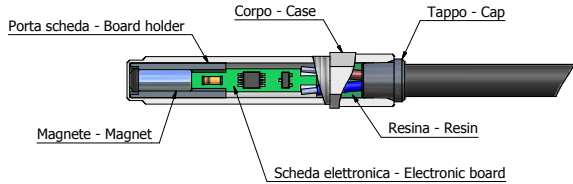
## Hall effect speed sensors (3)



- Fissaggio regolabile
- Compatibile con sensori induttivi per rilevamento di giri
- Opzionale resistenza di pull up interna per 12 o 24 Vdc
- Impiegabili nei settori automotive, agricolo, movimento terra, industriale, ferroviario, nautico e – su richiesta – militare.

- Adjustable fastening
- Possible alternative to 3 wires inductive sensors applications
- Optional internal pull-up resistor for 12 or 24Vdc
- Applicable in automotive, agricultural, earth-moving machinery, industrial, railway, nautic and – on demand – military fields

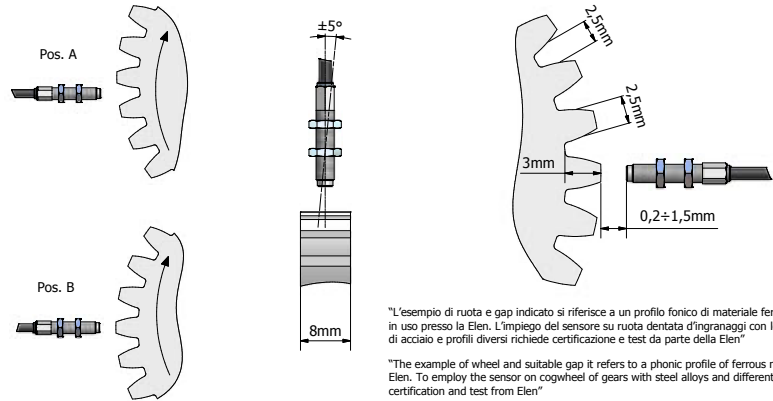
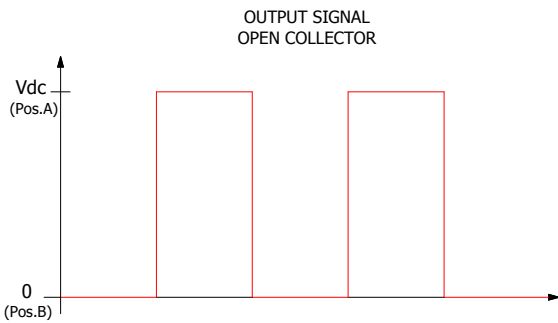
### DIMENSIONS



CONNECTOR - A	
TYPE	DESCRIPTION
1	Tyco superseal 3 pin contact
2	Deutsch 3 pin contact

### APPLICATIONS

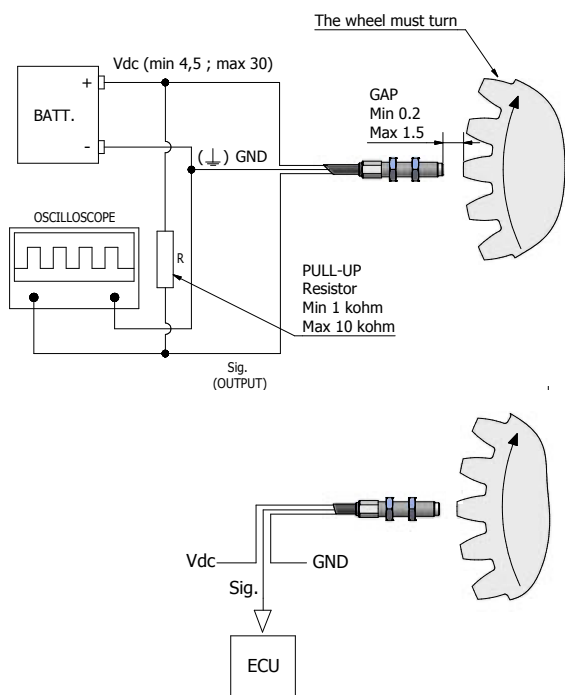
#### Output signal



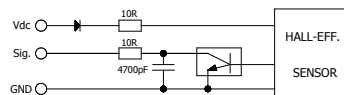
"L'esempio di ruota e gap indicato si riferisce a un profilo fonico di materiale ferroso in uso presso la Elen. L'impiego del sensore su ruota dentata d'ingranaggi con leghe di acciaio e profili diversi richiede certificazione e test da parte della Elen"

"The example of wheel and suitable gap it refers to a phonic profile of ferrous material used in Elen. To employ the sensor on cogwheel of gears with steel alloys and different profiles needs certification and test from Elen"

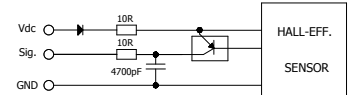
### Connection diagrams



SENSOR FUNCTIONAL SCHEME (NPN)



SENSOR FUNCTIONAL SCHEME (PNP)



### SPECIFICATIONS

CHARACTERISTICS	VALUE
Zero speed sensor	
Power supply:	4,5 ÷ 30 Vdc
Output current:	max 25 mA
Frequency:	15 kHz
Output signal (freq.):	NPN/PNP
Resistance:	145 Ohm ± 30 Ohm
Isolation resistance:	10 Mohm (500V)
Housing material:	stainless inox/OT58 lathed secondo I modelli
Tightening torque:	25 Nm
Operating temperature:	- 40 °C ÷ + 150 °C
Storage temperature:	- 65 °C ÷ + 150 °C
Overvoltage protection:	36 Vdc for 5'
Reverse polarity protection:	- 30 Vdc for 1h
Shortcircuit protection:	To ground and to Vdc for 5'
Overload protection:	30 mA for 5'
Transient voltage protected output and input:	VBR: min = 31,35; max = 34,65; ref. ISI 7637
Degree of protection:	IP67; ref. IEC 60529
Vibrations resistance:	1mm/100Hz (~8g); ref. EN 60068-2-6
EMC compatibility:	BCI CLASS "A" 100mA; 1-400 MHz; ref. ISO11452-4 (2005)
Resistance to corsive environments:	yes; ref. EN 60068-2-11
Output pins are protected against 2000V electrostatic discharge rif. according to hbm : mil-std-883; method 3015.	